

## Personal Website How-To

Have you built your own website? Did you go a step beyond the typical wordpress copy job? Do you want some place to display it besides your own computer?

Do you want your website to go live on the internet?

Here's a how-to on getting free server space to access your website from the internet if you're an ASU student.

If you are an ASU student you should have been given access to MyASU the online portal for ASU students.

Step One:

To access the server space that came with your MyASU you need to go to:

<https://selfsub.asu.edu>

You will see:



- 
- [ASURITEActivation](#)
  - [ASURITEManagement](#) (selfsub)
  - [ASURITEPasswordChanger](#)
  - [Lost ASURITE UserID/Password Retrieval](#)
- 

Click on [ASURITEManagement](#) (selfsub)

Log in with your ASU credentials:



You will see:

ASURITE Self Management

Welcome, **colson** You are currently logged in. Session Timeout: 19:46 powered by edna Build 1.0.2

## ASURITE Service Subscriptions

Current subscriptions for **colson**:

Subscription	Status
ASURITE Primary Login (Kerberos)	Active
GMail for ASU	Active
ASU Windows Active Directory (ASUAD)	Active
AFS Fileservice (network file space)	Active
Secured network access (Cisco/Perfigo)	Active
IT Computing Sites (MACOSX)	Active
Blackboard 9	Active
General/Statistics UNIX clusters (general.asu.edu and stats.asu.edu)	Active

MY ASURITE PROFILE  
CHANGE PASSWORD  
MyASU PORTAL

Select a service to SUBSCRIBE to:

Click Here → ☐ Personal Webpage Hosting ☐ Research UNIX Cluster (research2.asu.edu and medusa2.asu.edu)  
☐ SMTP authentication service

Subscribe To Selected Service

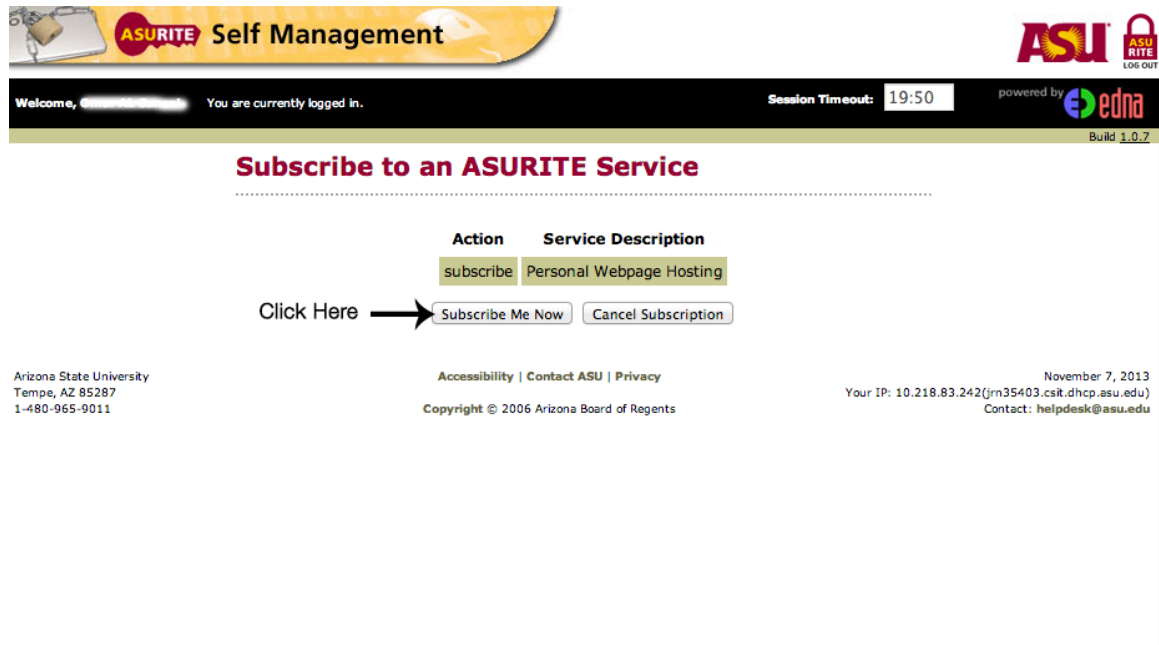
Arizona State University  
Tempe, AZ 85287  
1-480-965-9011

Accessibility | Contact ASU | Privacy  
Copyright © 2006 Arizona Board of Regents

November 7, 2013  
Your IP: 10.218.83.242(jrn35403.cs.it.dhcp.asu.edu)  
Contact: helpdesk@asu.edu

Click on “Personal Webpage Hosting” in the subscribe options at the bottom of the page centered.

This action allows the server to recognize that you wish to use your server space.



**ASURITE Self Management**

Welcome, [redacted] You are currently logged in. Session Timeout: 19:50 powered by edna Build 1.0.7

### Subscribe to an ASURITE Service

Action	Service Description
subscribe	Personal Webpage Hosting

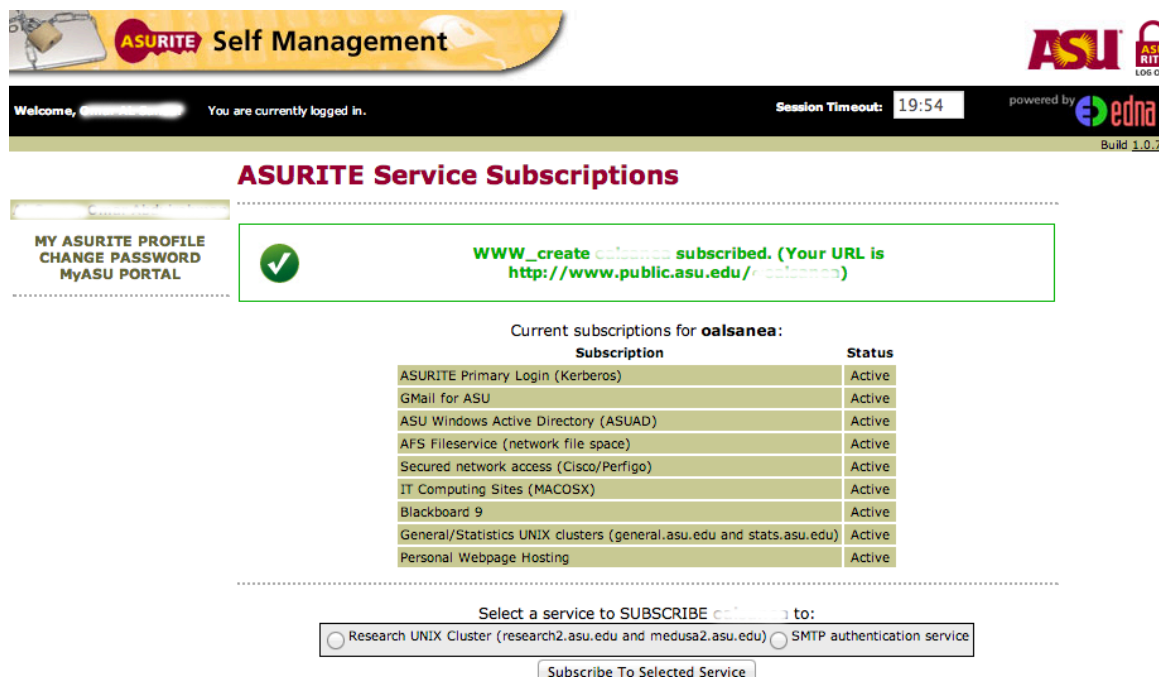
Click Here →

Arizona State University  
Tempe, AZ 85287  
1-480-965-9011

Accessibility | Contact ASU | Privacy  
Copyright © 2006 Arizona Board of Regents

November 7, 2013  
Your IP: 10.218.83.242(jrn35403.csit.dhcp.asu.edu)  
Contact: helpdesk@asu.edu

If everything is done right, you will see:




**ASURITE Self Management**

Welcome, [redacted] You are currently logged in. Session Timeout: 19:54 powered by edna Build 1.0.7

### ASURITE Service Subscriptions

MY ASURITE PROFILE  
CHANGE PASSWORD  
MyASU PORTAL

**WWW\_create oalsanea subscribed. (Your URL is http://www.public.asu.edu/~oalsanea)**

Current subscriptions for oalsanea:

Subscription	Status
ASURITE Primary Login (Kerberos)	Active
GMail for ASU	Active
ASU Windows Active Directory (ASUAD)	Active
AFS Fileservice (network file space)	Active
Secured network access (Cisco/Perfigo)	Active
IT Computing Sites (MACOSX)	Active
Blackboard 9	Active
General/Statistics UNIX clusters (general.asu.edu and stats.asu.edu)	Active
Personal Webpage Hosting	Active

Select a service to SUBSCRIBE to:

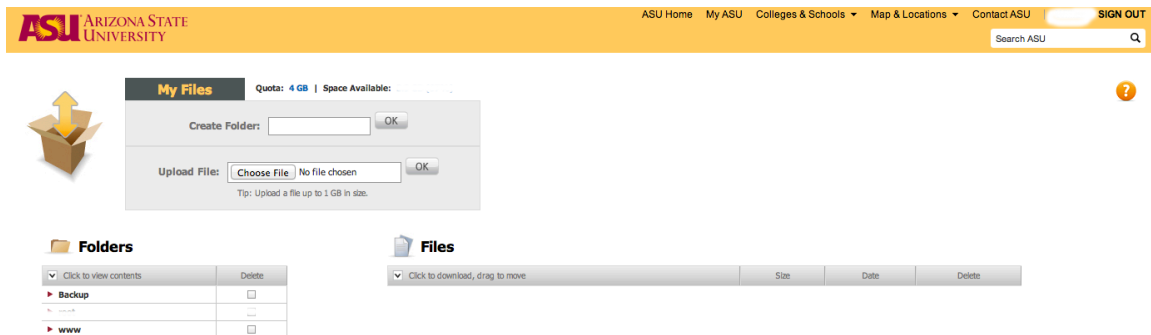
☒ Research UNIX Cluster (research2.asu.edu and medusa2.asu.edu) ☐ SMTP authentication service

Step Two:

Go to <https://www.asu.edu/myfiles>



After verifying your password you should see:



A reminder: Do not delete the Backup folder or you will be on the phone with tech support for hours as you have an administrator reset your serverspace!!

Click on the www file and see the publicwebsetup.html file. Click on the file and you will see:



Welcome to  
<http://www.public.asu.edu/>

---

**Information for wsgrey:**

Your new **www** directory has been successfully created and added to the [www.public.asu.edu](http://www.public.asu.edu) Web server. This page, named **index.html** has been created and saved in your **www** directory, which is [/afs/asu.edu/users/wsgrey/www](http://www.public.asu.edu/afs/asu.edu/users/wsgrey/www). You may begin adding and editing documents in your Web space immediately. To make your home page come up in place of this one, name your home page **index.html** before you upload it.

For personal website FAQs see [http://help.asu.edu/Personal\\_Websites\\_FAQs](http://help.asu.edu/Personal_Websites_FAQs)

Your "home" page must be named **index.html** to make it come up when your URL is entered as it did here. If you give it a different name, viewers will see a directory listing of all files in your Web space instead.

Users of Web page editors: The "publishing location" is not the same as your URL. Your publishing location is <ftp://general.asu.edu/afs/asu.edu/users/wsgrey/www> (Be aware that several recent editors have modified this publishing location to be <ftp://general.asu.edu/>)

Everything regarding your Web space is case-sensitive! Use all lower-case for all your filenames, and you'll never get confused.

For future reference, this page has also been saved in your Web space as <http://www.public.asu.edu/~wsgrey/publicwebsetup.html>.

This page will tell you where your server space is, and how to make your site respond properly when uploaded.

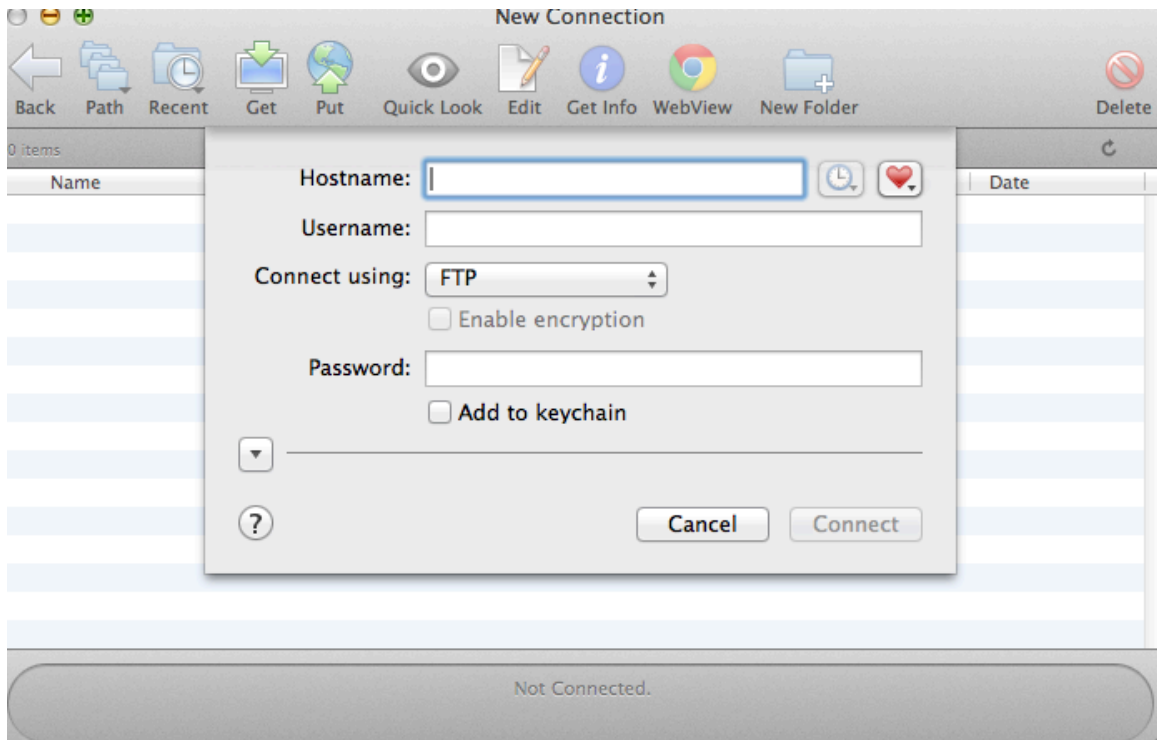
### Step 3:

After all of this you still need to upload your site to the server space. Of course you have already made your home page title "index.html" and linked to your other pages in a separate file that includes all additional information like img files. The standard is to call this file "root."

Now if you are on a computer at Cronkite you can open an application called Fetch



When you open this you will see:



You need to enter the Hostname as: general.asu.edu

The Username as: your ASURITE ID

Connect using: SFTP

And the Password: your ASURITE password

If you've done everything right, when you go to your server URL address:  
[www.asu.edu/YOURNAME](http://www.asu.edu/YOURNAME) you should see your site.